

# Quick U/S Case

Starr Knight  
June Faculty Meeting  
June 10, 2014

# Case

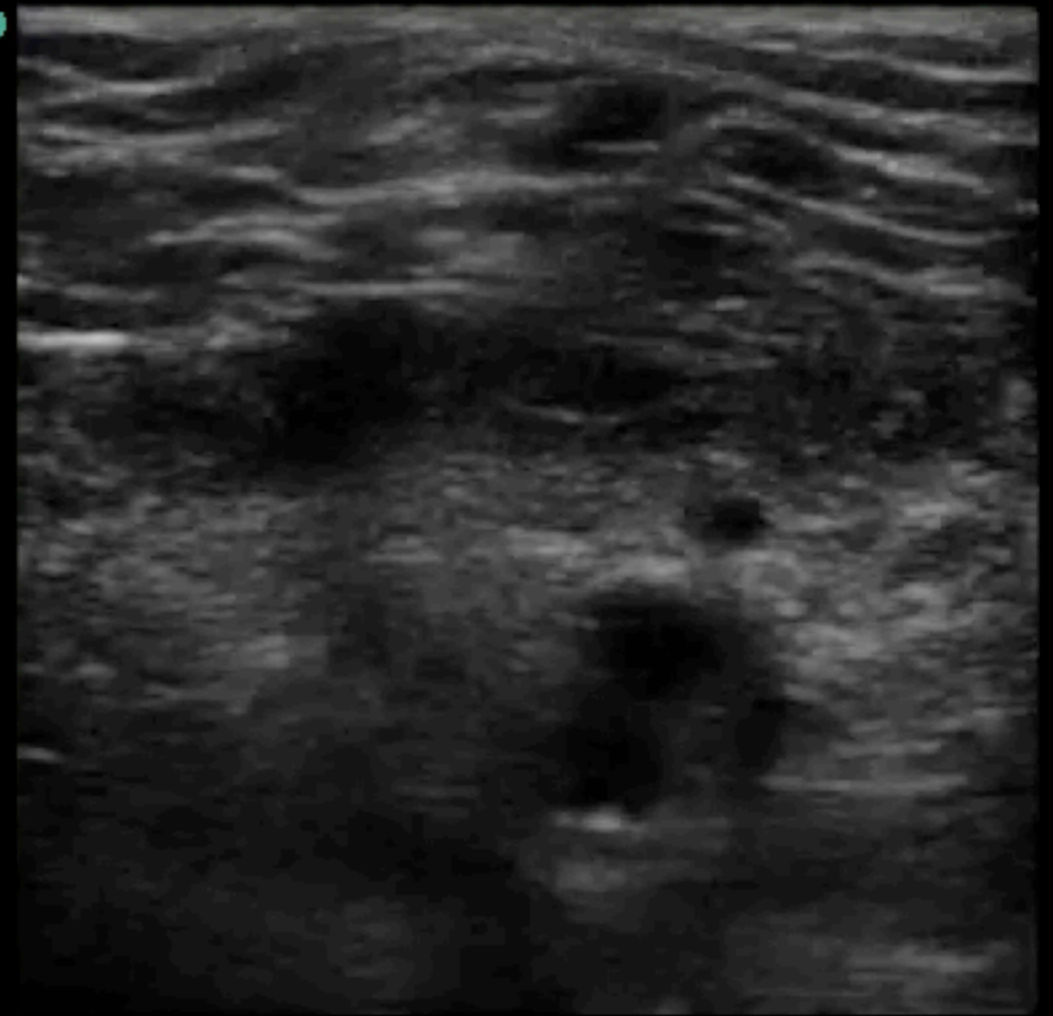
- 40 ♂ with RLE swelling and pain x 5 days.

# Bedside Images



Gen  
S MB

3.



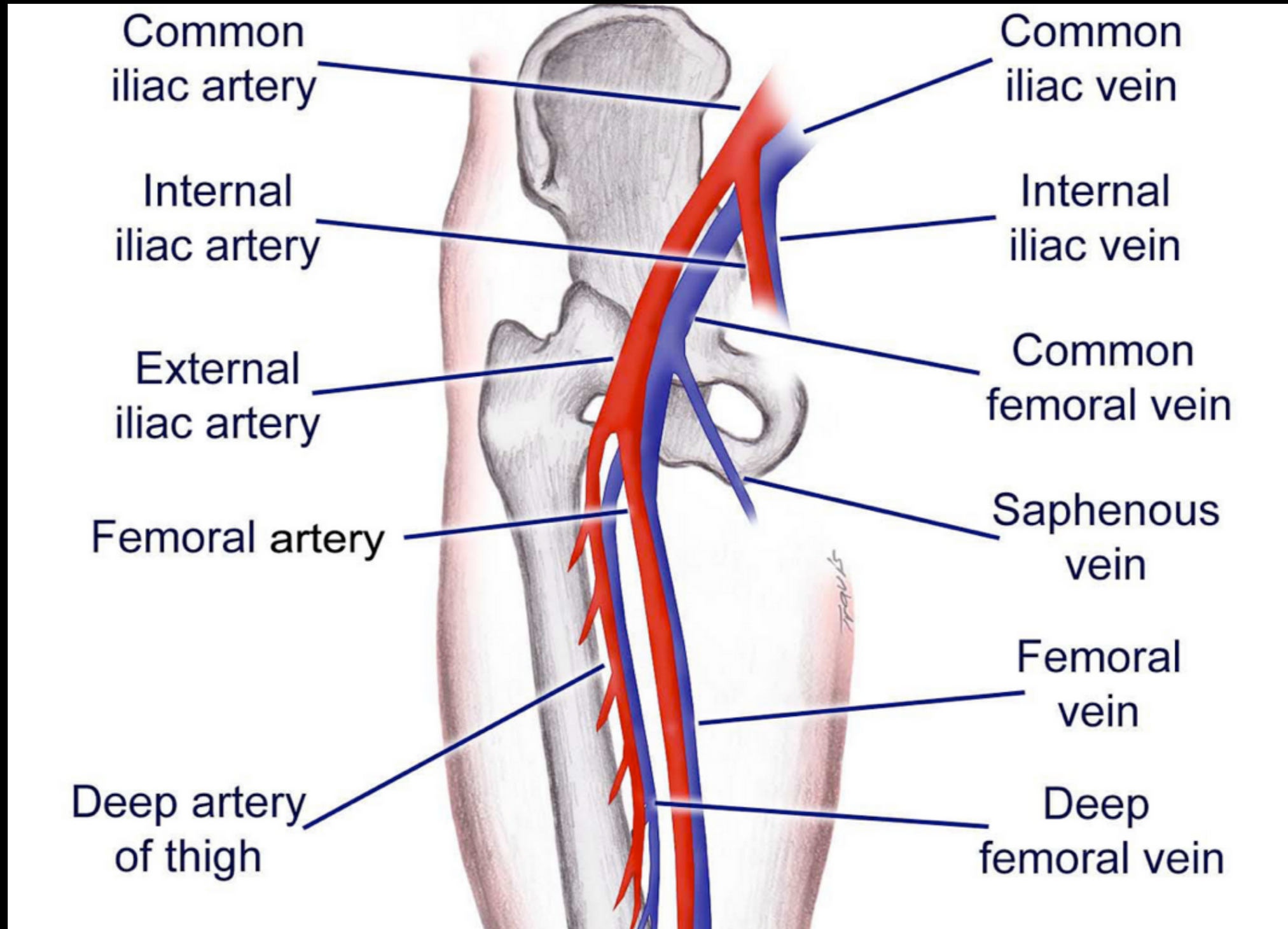
3.

Are these images  
adequate?

# 2 point Compression

- Femoral Compression
  - Common Femoral Vein & Artery
  - Sapho-Femoral Junction
  - Artery Bifurcation (SFA, PFA)
  - Venous Bifurcation (SFV, PFV)

# 2 point Compression



# Femoral Area



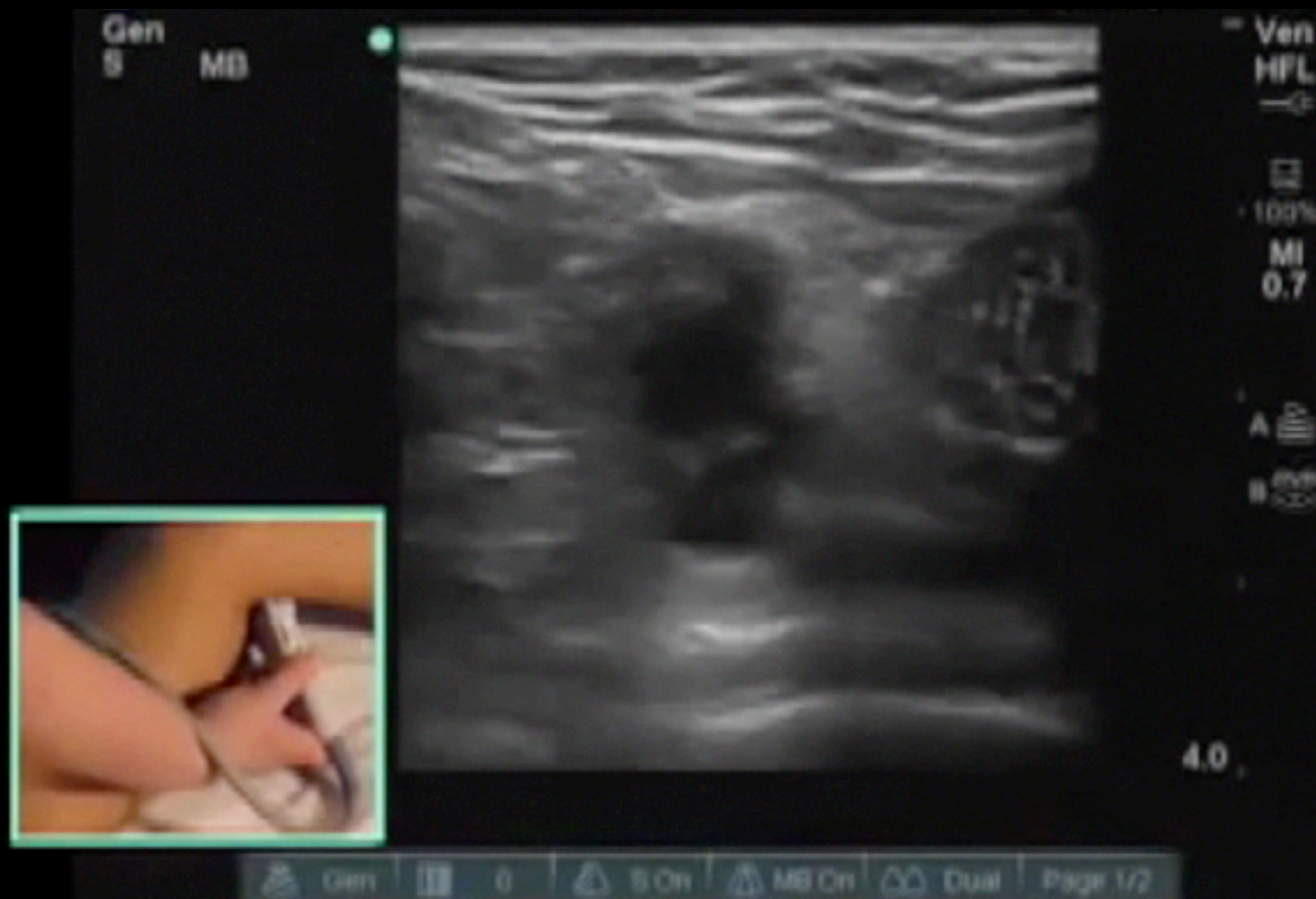
# 2 point Compression

- Popliteal Area
  - Popliteal Vein
  - Popliteal Artery


*“Pop is on Top”*



# Popliteal Area

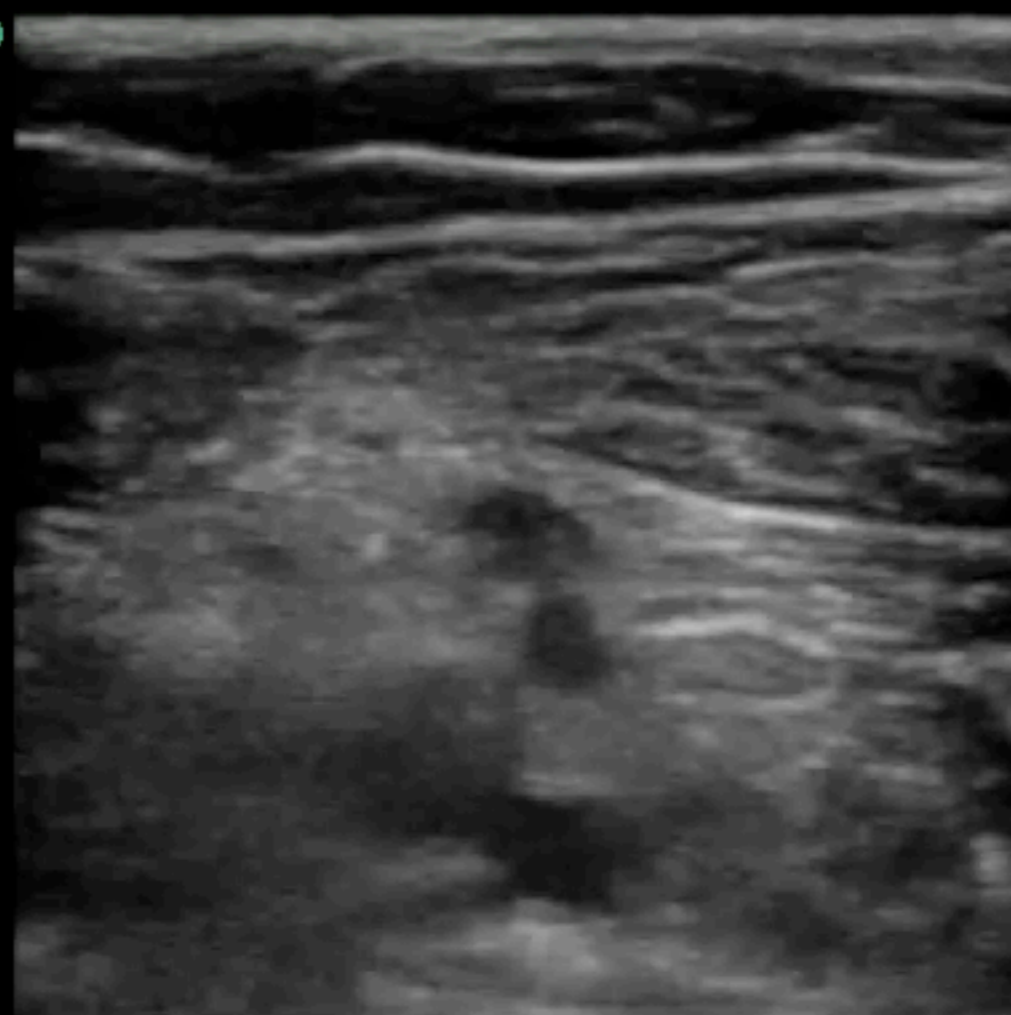




# Bedside Images

2012. 

2012Jun20 00:45

Gen  
S MB



Vas  
L38  
  
  
70%  
MI  
1.3  
TIS  
0.3

A   
B 

3.8

# Take Home Points

- Interrogate the 2 point compression areas
- Femoral
  - CFV-CFA
  - CFV-Saph
  - SFA-PFA
  - SFV-PFV
- Pop on Top (Superior to Pop Fossa)